



PHILIPS

EZTRAC™

EZ TRAILER TRACKING LIKE NO OTHER

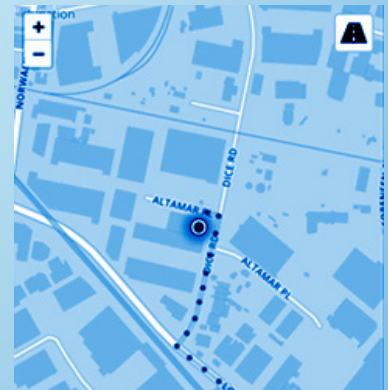
One step tech is here. Minimal install, maximum value with real-time trailer tracking that is built to take abuse.

HIGHLIGHTS

- Theft recovery device (concealed placement)
- Minimum install hassle, plugs into standard ABS harness
- 4G cellular LTE with nationwide coverage (includes Canada & Mexico)
- IP67 waterproof with STA-DRY® harness
- Can be powered by ABS or brake
- Simple to activate in 2 steps



24/7/365 FOR ALL ASSETS ON
THE PCT WEB PORTAL



4G LTE NATIONWIDE
COVERAGE

833.213.5839

www.phillips-connect.com

(S-PCT-EZT-ENG)
REV2 7/10/19

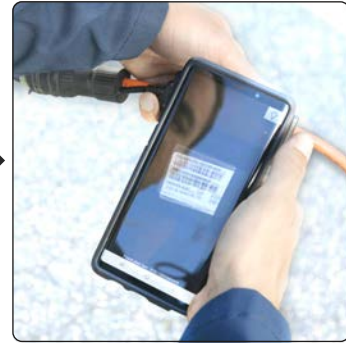
EZTRAC™



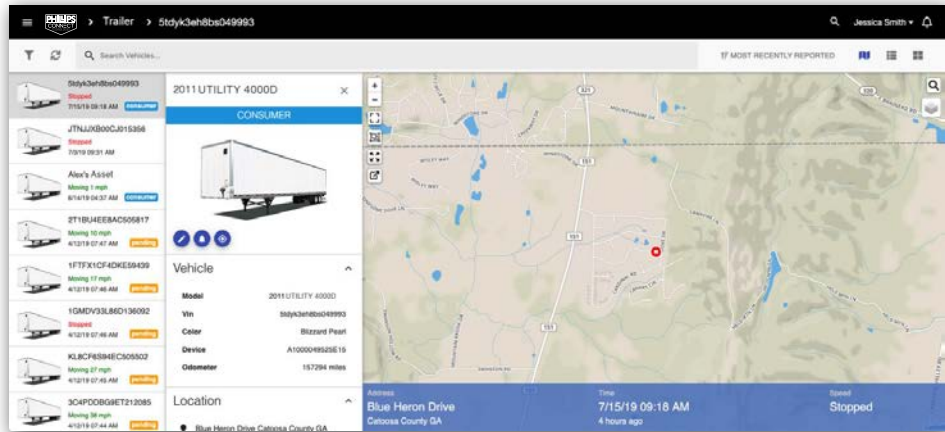
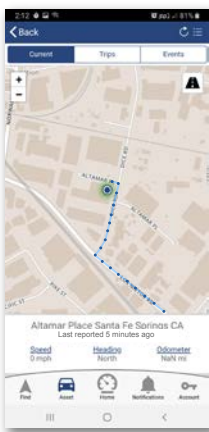
Download App



Scan Barcode



Fill in Information



SPECIFICATIONS

CELLULAR

- LTE Cat. 1
- HSPA fallback bands 2, 5 (TMO)
- Integrated high sensitivity antenna
- Auto register to packet network

GPS

- Channels: 56
- Tracking sensitivity: -162 dBm
- Acquisition sensitivity: -148 dBm
- Location accuracy: 2.5 CEP

INTERFACE CONNECTOR (GPS Device to Harness)

- PWR (ABS/Brakes), GND

BATTERY

- Internal battery: 80mAh
- Operating voltage: 6V - 28V
- Voltage over-protected TVS 36V and fused

- Power consumption:

Sleep: less than 60mW

Tracking: less than 400mW

ENVIRONMENTAL

- IP67 Enclosure
- Operation temperature: -20°C to +60°C w/BBU
- Storage temperature: -40°C to +85°C
- Operation humidity: 20% to 90% (non-condensing)
- Storage humidity: 10% to 95% RH (non-condensing)

APPROVALS

- FCC 47 CFR part 15, part 22, and part 24; IC
- RoHS2 and WEEE
- PTCRB